

VHR

Surface mount type series

- Super low ESR, High ripple current
- Large capacitance, Small size
- Load life of 10,000h at 105°C



SPECIFICATIONS

Items	Characteristics	
Temperature range	-55 to +105°C	
Rated voltage range	2.5 to 16Vdc	
Capacitance range	39 to 2,700μF	
Capacitance tolerance	±20% [M] (at 20°C, 120Hz)	
Tangent of loss angle	Less than or equal to the value of Standard Ratings (at 20°C, 120Hz)	
Leakage current	Less than or equal to the value of Standard Ratings (at 20°C, after 2 minutes)	
ESR	Less than or equal to the value of Standard Ratings	
Characteristics of impedance	$Z_{+105^{\circ}\text{C}}/Z_{+20^{\circ}\text{C}} \leq 1.25$, $Z_{-55^{\circ}\text{C}}/Z_{+20^{\circ}\text{C}} \leq 1.25$ at 100kHz 105°C, 10,000 hrs at rated voltage	
Endurance	Appearance	No significant damage
	Capacitance change	Within±20% of the initial value
	Tangent of loss angle (tanδ)	≤150% of the initial specified value
	ESR(mΩ)	≤150% of the initial specified value
	Leakage current	≤The initial specified value
Damp Heat (Steady State)	60°C, 90 to 95% RH, 1,000 hrs, No-applied Voltage	
	Appearance	No significant damage
	Capacitance change	Within±20% of the initial value
	Tangent of loss angle (tanδ)	≤150% of the initial specified value
	ESR(mΩ)	≤150% of the initial specified value
Resistance to soldering heat	VPS (230°C, 75s)	
	Appearance	No significant damage
	Capacitance change	Within±10% of the initial value
	Tangent of loss angle (tanδ)	≤130% of the initial specified value
	ESR(mΩ)	≤130% of the initial specified value
	Leakage current	≤The initial specified value

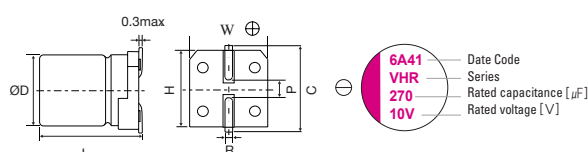
*In case of some problems for measured values, measure after applying rated voltage for 120 minutes at 105°C

SIZE LIST

(unit : mm)

μF	RV(SV)	2.5 (3.3)	4 (5.2)	6.3 (8.2)	10 (11.5)	16 (18.4)
39						5 x 5.9
68					5 x 5.9	6.3 x 5.9
82						6.3 x 5.9
100				5 x 5.9		6.3 x 5.9
120				5 x 5.9	6.3 x 5.9	8 x 6.9
150			5 x 5.9		6.3 x 5.9	8 x 6.9
180	5 x 5.9					
220				6.3 x 5.9		
270					8 x 6.9	8 x 11.9
330			6.3 x 5.9	6.3 x 5.9		8 x 11.9
390	6.3 x 5.9			8 x 6.9		
560	6.3 x 5.9		8 x 6.9 8 x 11.9			
680	8 x 6.9					
820	8 x 11.9			8 x 11.9		
1000	8 x 11.9					
1200			8 x 11.9			
1500	8 x 11.9		8 x 11.9			
2700	10 x 12.6					

MARKING AND DIMENSIONS

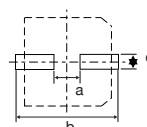


(unit : mm)

Size	φD±0.5	L	W ^{+0.1} _{-0.4}	H±0.2	C±0.2	R	P±0.2
5 x 5.9	5	5.9	5.3	5.3	6	0.6 to 0.8	1.4
6.3 x 5.9	6.3	5.9	6.6	6.6	7.3	0.6 to 0.8	2.1
8 x 6.9	8	6.9	8.3	8.3	9	0.6 to 0.8	3.2
8 x 11.9	8	11.9	8.3	8.3	9	0.8 to 1.1	3.2
10 x 12.6	10	12.6	10.3	10.3	11	0.8 to 1.1	4.6

RECOMMENDED LAND PATTERN DIMENSION OF PCB

(unit : mm)



Size	a	b	c
5 x 5.9	1.4	7.4	1.6
6.3 x 5.9	2.1	9.1	1.6
8 x 6.9	2.8	11.1	1.9
8 x 11.9	2.8	11.1	1.9
10 x 12.6	4.3	13.1	1.9

*RV : Rated Voltage [V] SV : Surge Voltage [V] (at room temperature)

Conductive Polymer Aluminum Capacitors

STANDARD RATINGS

Rated Voltage [Vdc]	Rated Capacitance [μ F]	Size Φ D x L [mm]	ESR (20°C, 100kHz) [m Ω] [max.]	Rated Ripple Current (105°C, 100kHz) [mA _{rms}]	Tangent of Loss Angel [max.]	Leakage Current [μ A, max.]	Part Number
2.5	180	5 x 5.9	19	2800	0.1	300	2VHR180MB6
	390	6.3 x 5.9	15	3160	0.1	300	2VHR390MC6
	560	6.3 x 5.9	16	3500	0.1	300	2VHR560MC6
	680	8 x 6.9	20	3370	0.1	500	2VHR680MD7
	820	8 x 11.9	9	5380	0.1	500	2VHR820MD12
	1000	8 x 11.9	10	5380	0.1	500	2VHR1000MD12
	1500	8 x 11.9	10	5150	0.1	750	2VHR1500MD12
	2700	10 x 12.6	12	5070	0.1	1350	2VHR2700ME12
4	150	5 x 5.9	20	2730	0.1	300	4VHR150MB6
	330	6.3 x 5.9	15	3160	0.1	300	4VHR330MC6
	560	8 x 6.9	22	3220	0.1	500	4VHR560MD7
	560	8 x 11.9	9	5380	0.1	500	4VHR560MD12
	1200	8 x 11.9	12	4700	0.1	960	4VHR1200MD12
	1500	8 x 11.9	12	4700	0.1	1200	4VHR1500MD12
6.3	100	5 x 5.9	25	2150	0.1	300	6VHR100MB6
	120	5 x 5.9	21	2660	0.1	300	6VHR120MB6
	220	6.3 x 5.9	15	3160	0.1	300	6VHR220MC6
	330	6.3 x 5.9	17	3390	0.1	415	6VHR330MC6
	390	8 x 6.9	22	3220	0.1	491	6VHR390MD7
	820	8 x 11.9	12	4700	0.1	1033	6VHR820MD12
10	68	5 x 5.9	23	2540	0.1	300	10VHR68MB6
	120	6.3 x 5.9	22	2600	0.1	300	10VHR120MC6
	150	6.3 x 5.9	22	2600	0.1	300	10VHR150MC6
	270	8 x 6.9	22	3220	0.1	500	10VHR270MD7
16	39	5 x 5.9	27	2350	0.1	300	16VHR39MB6
	68	6.3 x 5.9	25	2440	0.1	300	16VHR68MC6
	82	6.3 x 5.9	25	2490	0.1	300	16VHR82MC6
	100	6.3 x 5.9	24	2490	0.1	300	16VHR100MC6
	120	8 x 6.9	27	2900	0.1	500	16VHR120MD7
	150	8 x 6.9	22	3220	0.1	500	16VHR150MD7
	270	8 x 11.9	16	4070	0.1	864	16VHR270MD12
	330	8 x 11.9	16	4070	0.1	1056	16VHR330MD12

